

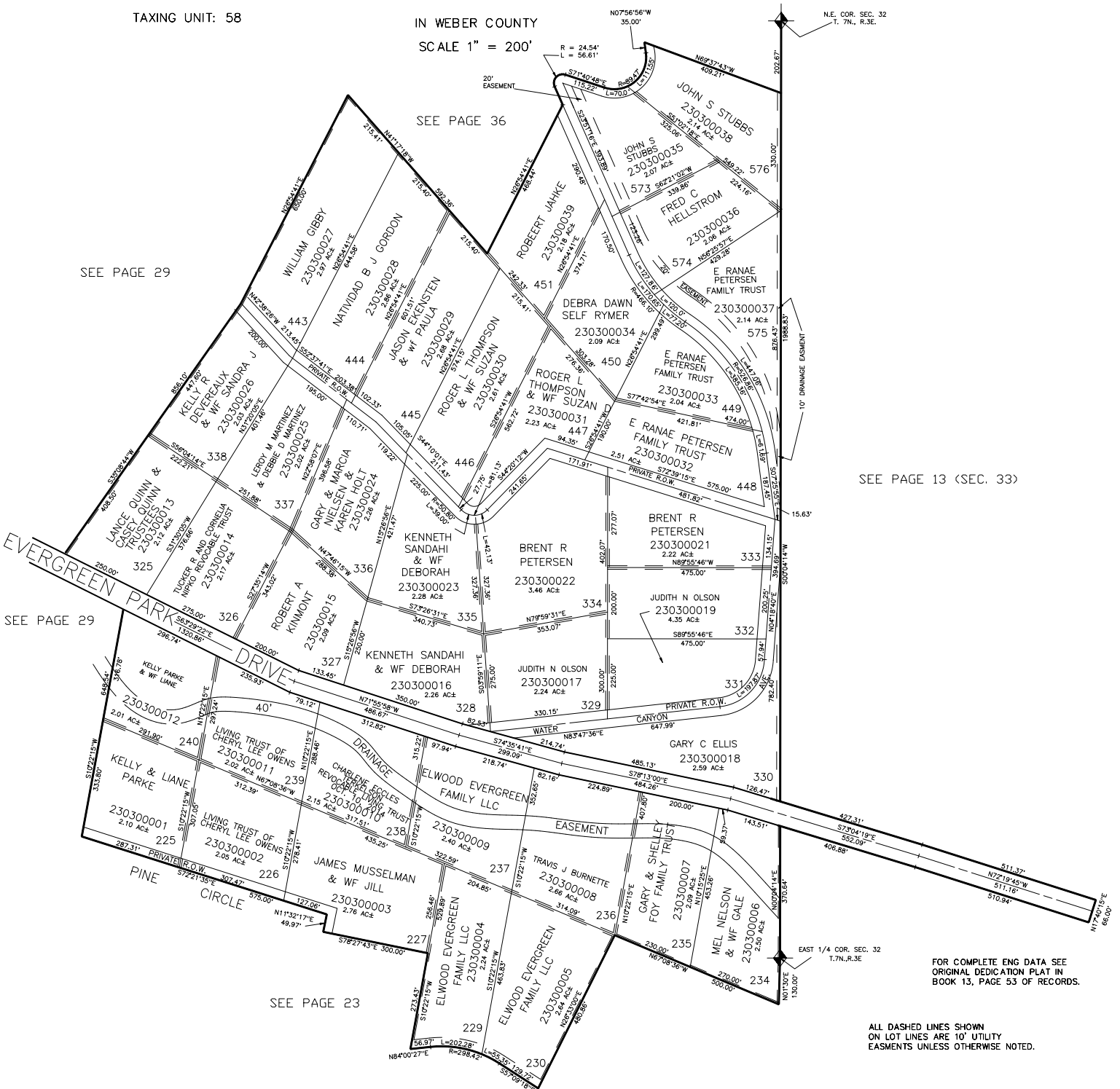
PART OF SEC. 32-33, T.7N., R.3E., S.L.B. & M.
EVERGREEN PARK SUBDIVISION NO. 1
 LOTS 225-227, 229-230, 234-240, 325-338, 443-451, 573-576

TAXING UNIT: 58

IN WEBER COUNTY

SCALE 1" = 200'

N.E. COR. SEC. 32
T. 7N., R.3E.



SEE PAGE 36

SEE PAGE 29

SEE PAGE 13 (SEC. 33)

SEE PAGE 29

SEE PAGE 23

FOR COMPLETE ENG DATA SEE ORIGINAL DEDICATION PLAT IN BOOK 13, PAGE 53 OF RECORDS.

ALL DASHED LINES SHOWN ON LOT LINES ARE 10' UTILITY EASEMENTS UNLESS OTHERWISE NOTED.